

AREA TABULATIONS

LOT AREAS	1,117,040 Sq. Ft.
60' R/W	161,187 Sq. Ft.
80' R/W	206,638 Sq. Ft.
PARCELS A-1 & 2	10,400 Sq. Ft.
PARCELS B-1, 2, 3 & 4	82,834 Sq. Ft.
PARCEL L-1	636,963 Sq. Ft.
PARCEL N-1	151,462 Sq. Ft.
PARCEL R-1	379,880 Sq. Ft.
	2,746,404 Sq. Ft. — 63.048 Acs.

42/103

WINDING LAKES SECTION TWO

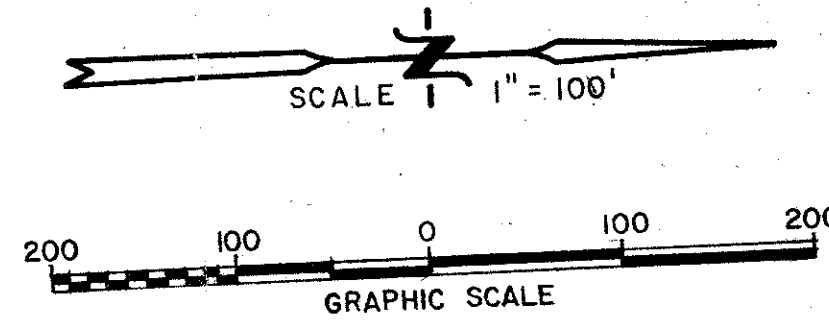
A PART OF A P.U.D. *Logger Run*
Sub TR R45

BEING A REPLAT OF TRACTS "Q" AND "R" AND A PORTION OF TRACT "S-7", BOUNDARY PLAT OF ORIOLE COUNTRY AS RECORDED IN PLAT BOOK 32, PAGES 175 THRU 180 INC., PUBLIC RECORDS OF PALM BEACH COUNTY, FLORIDA.
SECTIONS 23 & 26, TOWNSHIP 47 SOUTH, RANGE 41 EAST.

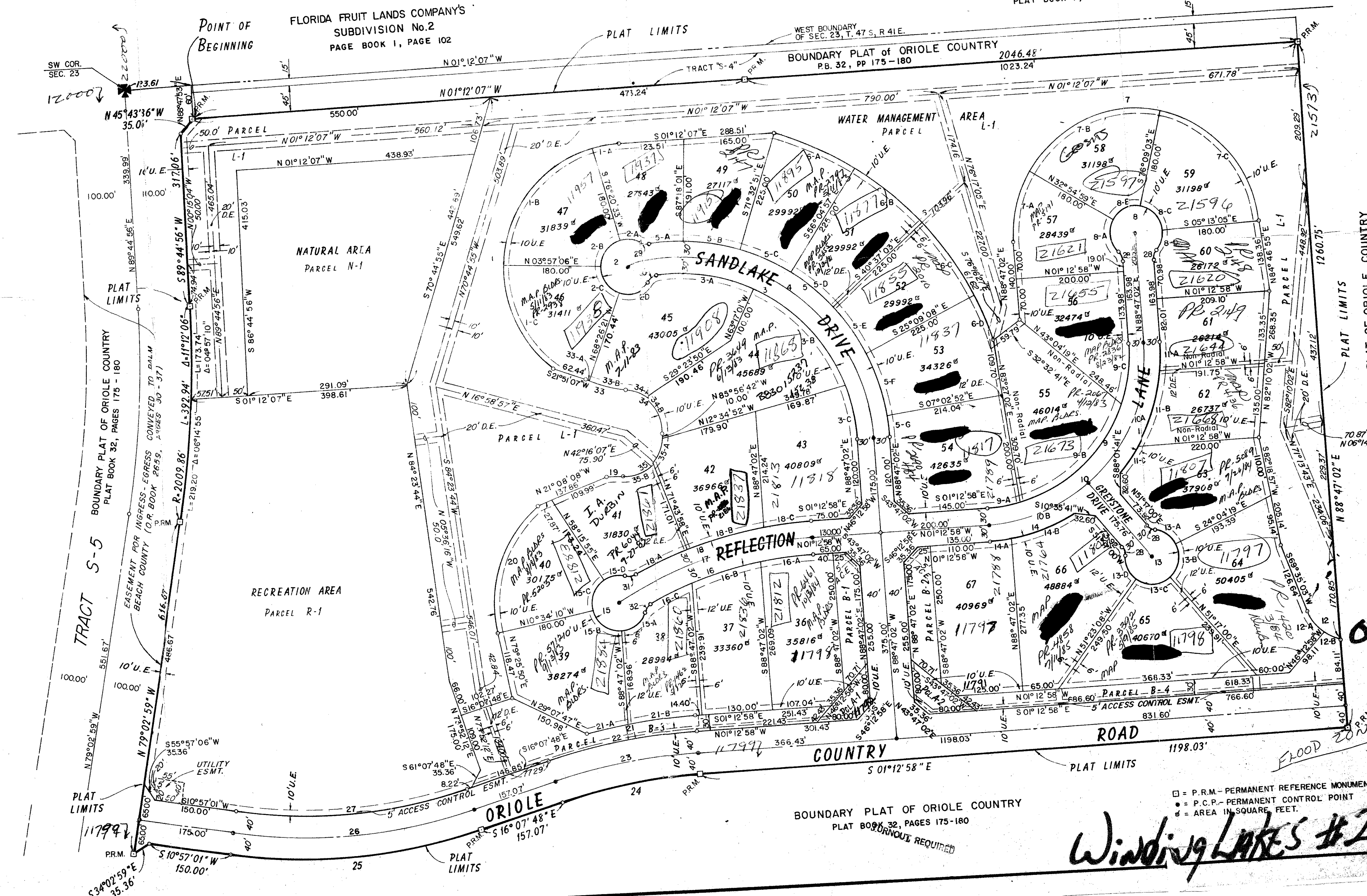
PREPARED BY

BROOME AND FARINA, INC.
ENGINEERS - PLANNERS - SURVEYORS
CORAL SPRINGS, FLORIDA
By: JOHN A. FARINA, P.L.S. 1564

FLORIDA FRUIT LANDS COMPANY'S
SUBDIVISION No. 2
PLAT BOOK 1, PAGE 102



SHEET 2 of 2 SHEETS



CURVE DATA			
No.	RADIUS	DELTA	ARC
1	230.00'	140° 24' 06"	563.61'
1-A	"	12° 27' 20"	50.00'
1-B	"	72° 23' 27"	290.60'
1-C	"	56° 53' 21"	223.01'
2	50.00'	286° 07' 13"	249.69'
2-A	"	45° 22' 22"	39.60'
2-B	"	72° 23' 27"	63.17'
2-C	"	75° 11' 00"	65.61'
3	321.35'	94° 50' 55"	531.98'
3-A	"	32° 46' 52"	183.88'
3-B	"	44° 14' 17"	248.12'
3-C	"	17° 49' 46"	100.00'
4	351.35'	103° 54' 43"	637.22'
5	381.35'	97° 38' 52"	640.12'
5-A	"	10° 05' 24"	67.16'
5-B	"	15° 45' 10"	104.85'
5-C	"	15° 27' 54"	102.93'
5-D	"	15° 27' 54"	102.93'
5-E	"	18° 06' 16"	120.30'
5-F	"	05° 49' 54"	38.82'
6	606.35'	54° 04' 36"	572.29'
6-A	"	15° 27' 54"	163.66'
6-B	"	15° 27' 54"	163.66'
6-C	"	15° 27' 54"	163.66'
6-D	"	07° 40' 53"	81.29'
7	230.00'	175° 59' 53"	706.50'
7-A	"	34° 07' 57"	137.02'
7-B	"	70° 55' 58"	284.74'
7-C	"	70° 55' 58"	284.74'
8	500.00'	265° 40' 01"	231.84'
8-A	"	76° 57' 57"	67.17'
8-B	"	70° 55' 58"	61.90'
8-C	"	46° 50' 07"	40.87'
8-D	"	90° 00' 00"	442.78'
9	281.84'	12° 11' 52"	60.00'
9-A	"	54° 56' 13"	270.23'
9-B	"	22° 51' 56"	112.47'
10	311.84'	90° 00' 00"	489.83'
10-A	"	52° 32' 56"	285.73'
10-B	"	37° 30' 02"	204.10'
11	341.84'	43° 52' 36"	261.78'
11-A	"	08° 21' 24"	49.86'
11-B	"	24° 00' 36"	143.25'
11-C	"	11° 30' 34"	68.67'
12	90.00'	53° 25' 30"	83.92'
12-A	"	32° 29' 58"	51.05'
12-B	"	20° 56' 32"	32.87'
13	50.00'	265° 40' 01"	231.84'
13-A	"	57° 26' 41"	50.16'
13-B	"	77° 18' 52"	67.48'
13-C	"	55° 30' 08"	48.44'
14	341.84'	28° 52' 40"	172.29'
14-A	"	06° 43' 11"	40.09'
14-B	"	22° 09' 28"	132.20'
15	50.00'	265° 40' 01"	231.84'
15-A	"	69° 42' 40"	60.83'
15-B	"	89° 36' 46"	70.38'
15-C	"	68° 50' 05"	60.07'
15-D	"	46° 24' 10"	40.49'
16	720.00'	24° 48' 55"	311.84'
16-A	"	07° 20' 38"	92.29'
16-B	"	10° 37' 04"	133.43'
16-C	"	06° 51' 13"	86.13'
17	750.00'	28° 51' 46"	377.81'
18	780.00'	25° 06' 08"	341.73'
18-A	"	08° 03' 03"	109.60'
18-B	"	11° 01' 06"	150.00'
18-C	"	06° 01' 58"	82.13'
19	230.00'	07° 45' 05"	31.12'
20	230.00'	08° 21' 16"	248.86'
21	110.00'	108° 21' 16"	204.15'
22	"	06° 59' 54"	78.28'
23	1080.00'	14° 54' 30"	281.12'
24	1040.00'	14° 54' 30"	270.71'
25	1000.00'	14° 54' 30"	260.30'
26	960.00'	27° 04' 50"	472.65'
27	920.00'	27° 04' 50"	453.73'
28	25.00'	27° 04' 50"	434.83'
29	25.00'	42° 50' 00"	18.89'
30	25.00'	39° 06' 20"	17.06'
31	25.00'	47° 33' 27"	20.75'
32	25.00'	40° 59' 11"	17.88'
33	230.00'	44° 53' 44"	19.59'
33-A	"	17° 47' 49"	71.48'
33-B	"	01° 02' 28"	4.18'
34	75.90'	50° 00' 00"	67.27'
34-A	"	18° 45' 23"	119.22'
34-B	"	33° 26' 50"	44.30'
35	75.90'	50° 00' 00"	78.93'
35-A	"	39° 12' 48"	139.22'
35-B	"	51° 47' 11"	68.60'

0275-306

Winding Lakes #2 42/103 P.N. 9702

□ = P.R.M. - PERMANENT REFERENCE MONUMENT
● = P.C.P. - PERMANENT CONTROL POINT
• = AREA IN SQUARE FEET.